

Renovation of the intersection



Traffic Circle

Roundabout

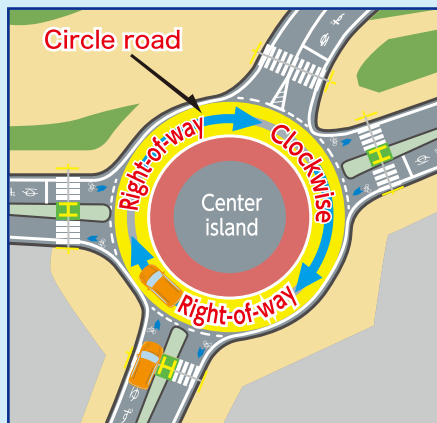
Mid-February, 2022 (Estimated)

*Details will be posted on local signs.

Location: Sato-cho, Anjo

? What is a traffic circle (Roundabout)?

A traffic circle is a circular intersection without traffic lights. You drive clockwise around the circle road and exit at your direction. At a traffic circle, vehicles inside the traffic circle have priority.



? Where is it?



Benefits of a traffic circle (Roundabout)

Improving Safety



Reduce vehicle's speed.

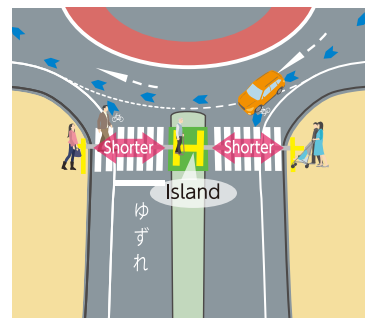
Drivers reduce speed in order to avoid the center island.

This design makes it difficult to go too fast.



Pedestrians can cross easily.

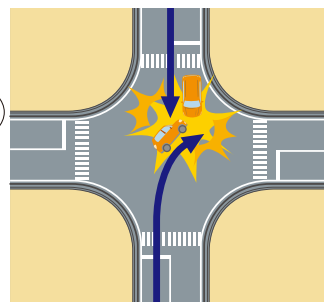
Pedestrians can cross the crosswalk at ease for the median island between vehicle lanes. And also, pedestrians easily confirm their safety because vehicle's direction is limited.



Reduce serious accident.

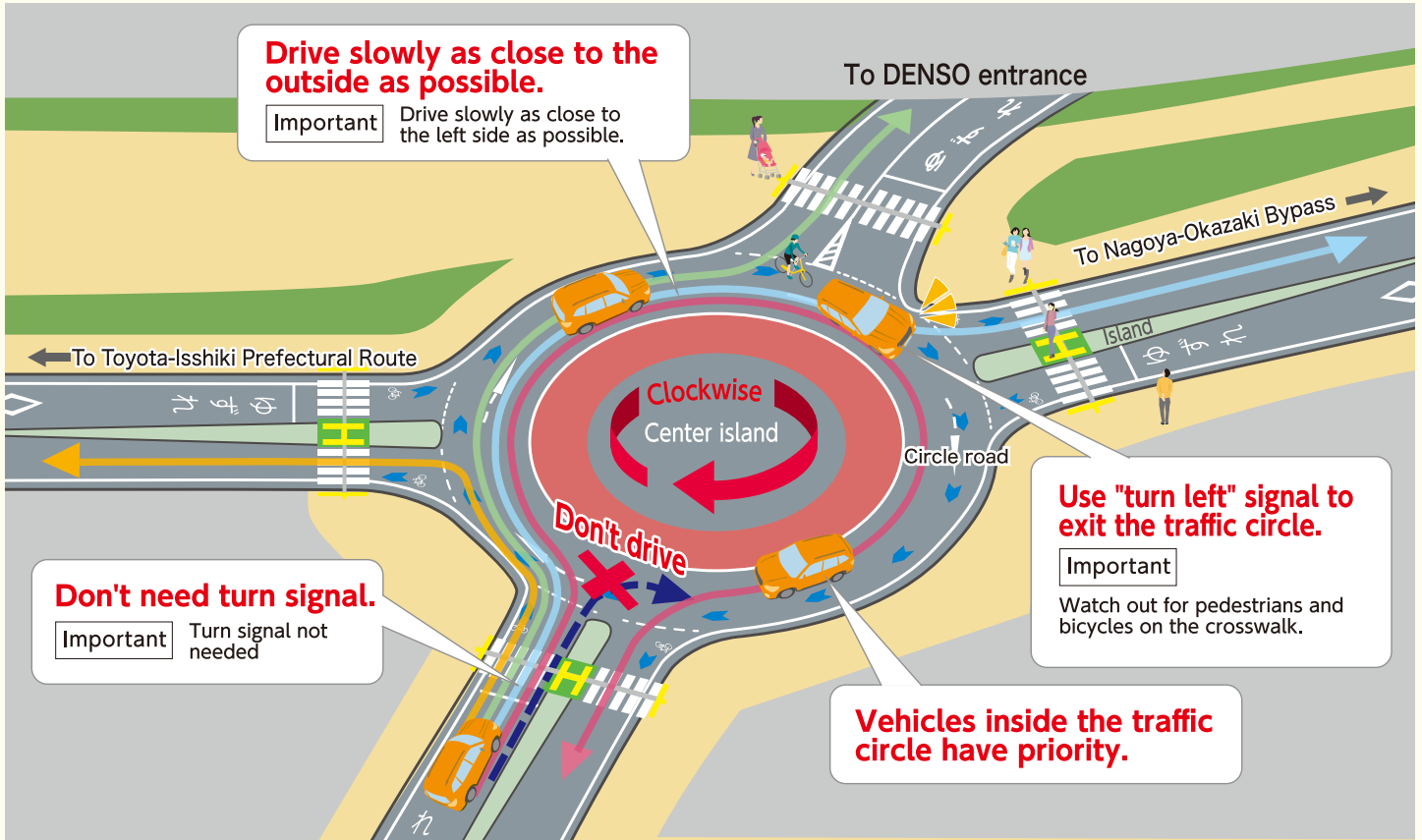
Since vehicles drive one way in the traffic circle, serious accidents are less likely occur. Traffic circle can minimize accidents to reduce driving speed.

It's the ideal shape!

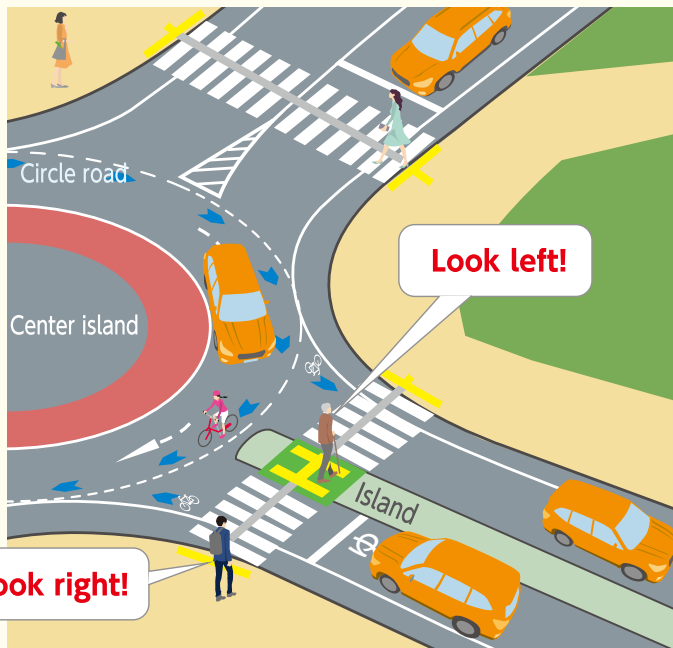


Driving Rules at a traffic circle (Roundabout)

By car

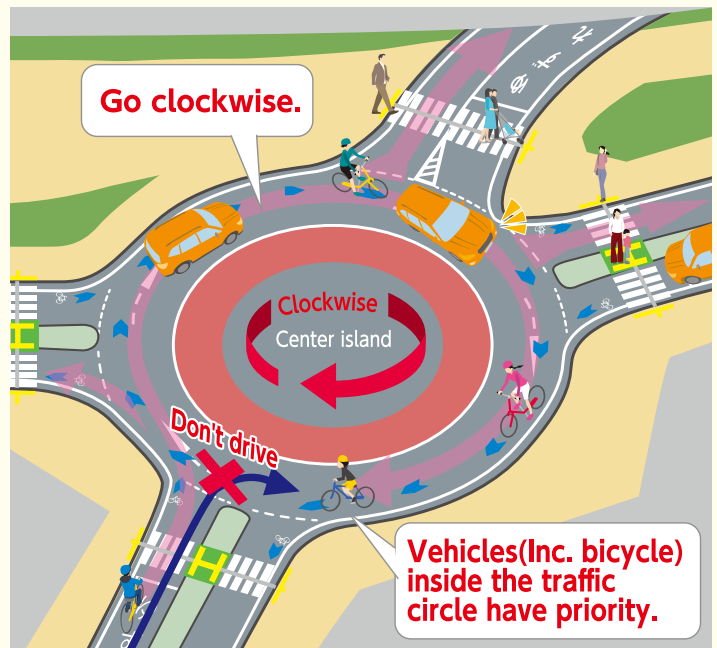


Pedestrians



When you cross the crosswalk, look at your right side. At the island in the middle, look at your left side. Make sure it's safe and cross the crosswalk.

By bicycle



Drive clockwise same as vehicles. Drive making space with vehicles to avoid contact with them.