

Liquefaction Risk Map

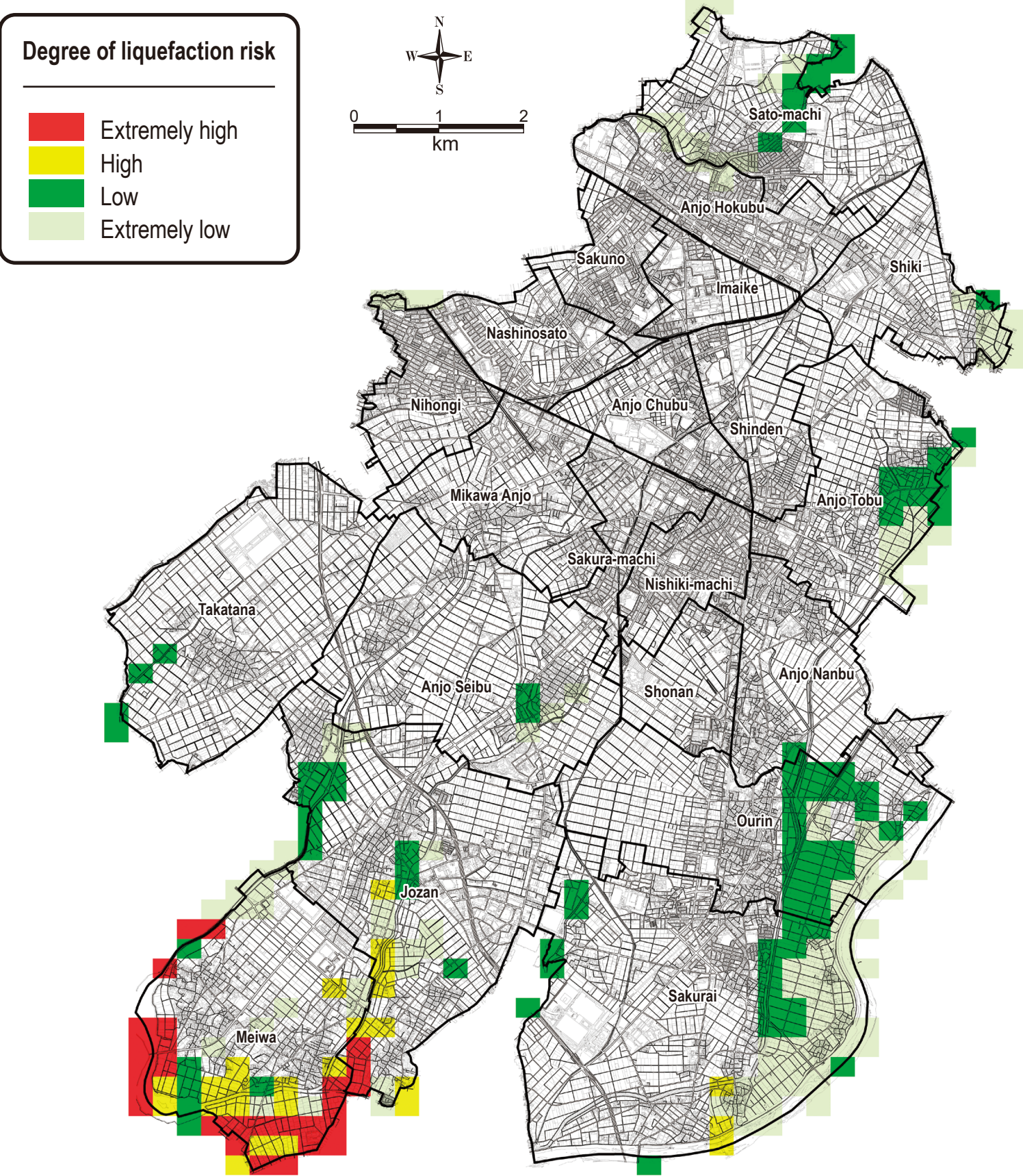
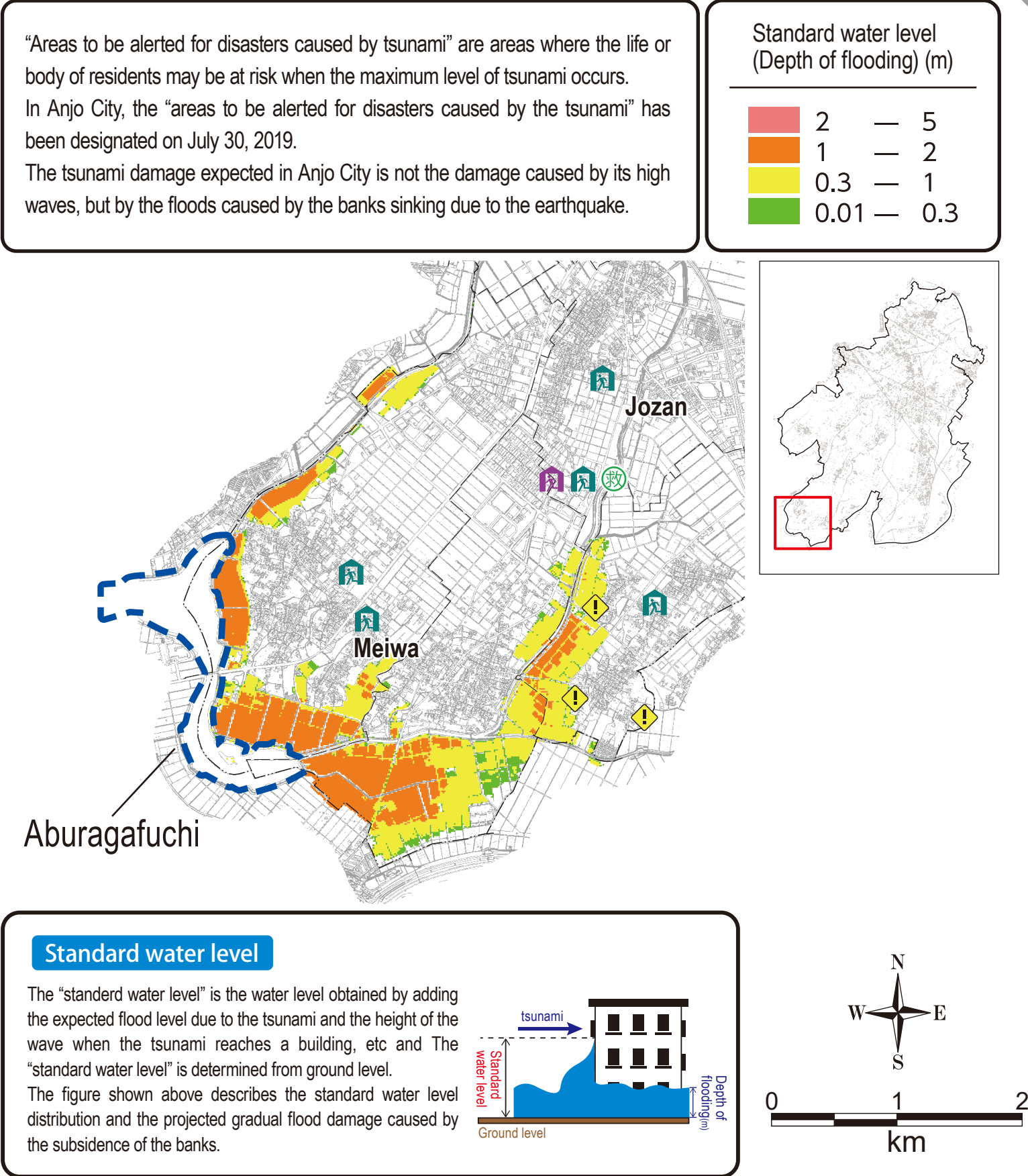
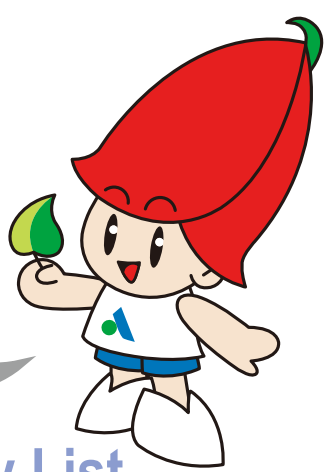


Figure showing the water level in “Areas to be alerted for disasters caused by tsunami”



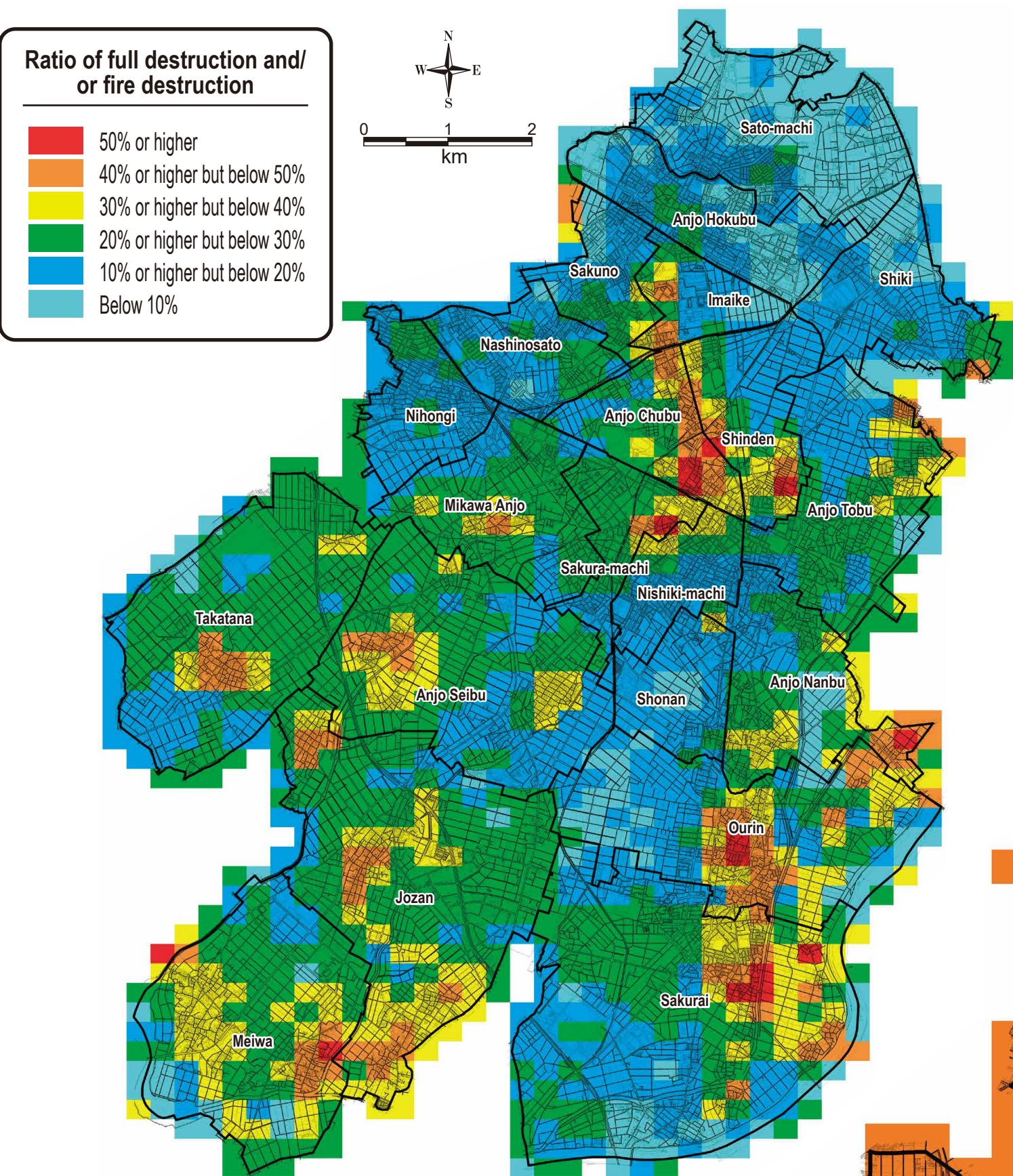
This is a list of places to evacuate to if your home is destroyed by an earthquake or you lose access to water and sewer services.



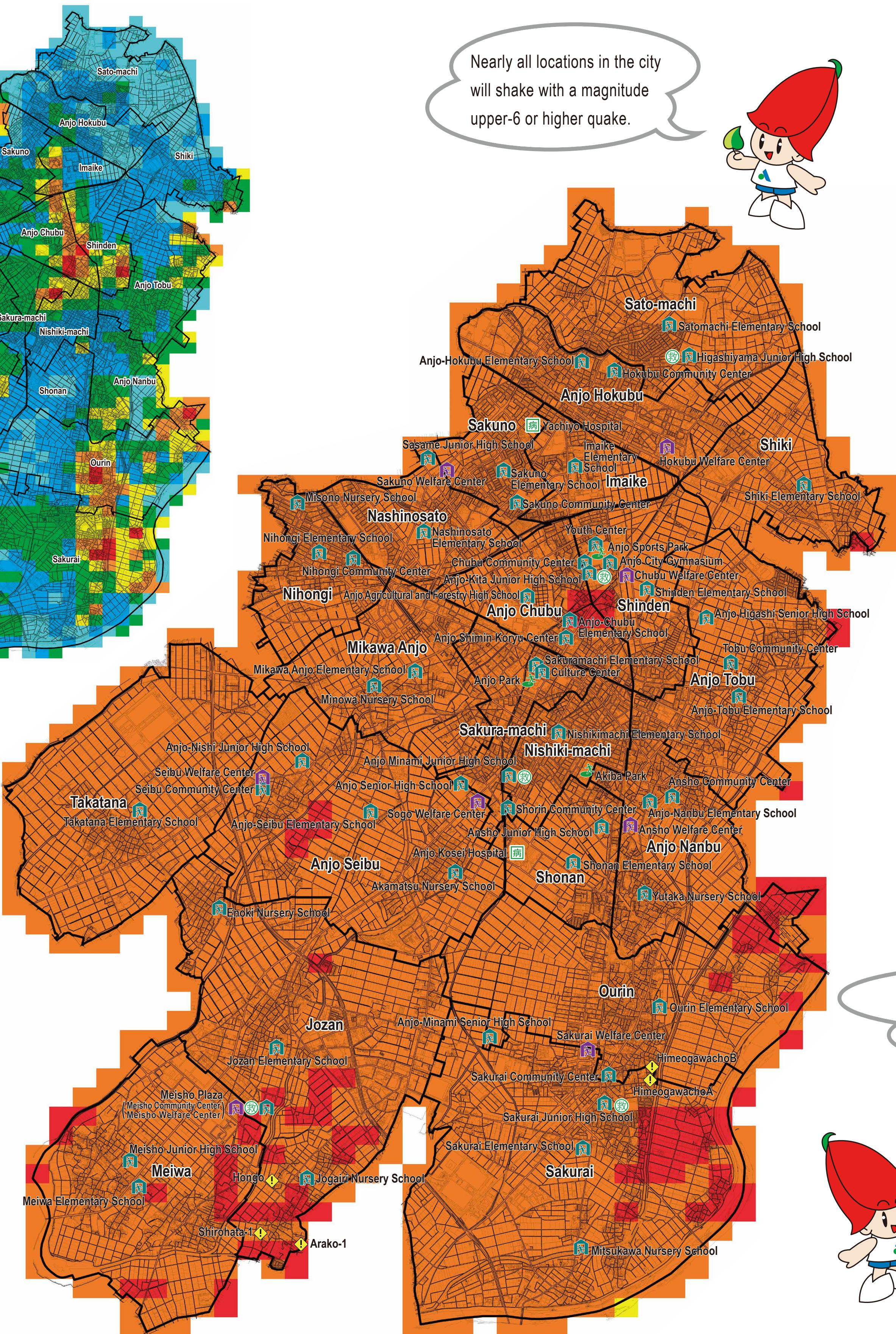
Evacuation Facility List

| District | Type of evacuation facility | Facility name | Phone number | Location |
|----------|--------------------------------------|--|--------------|---------------------------------|
| Hokubu | Community center evacuation facility | Hokubu Community Center | 98-3751 | 4-12-4 Sato-cho |
| | General evacuation facility | Satomachi Elementary School | 98-5900 | 1-5 Sukudori Sato-cho |
| | | Shiki Elementary School | 97-8202 | 45 Goyochi Kakisaki-cho |
| | | Anjo-Hokubu Elementary School | 98-0825 | 8-9-9 Imahonmachi |
| Sakuno | Community center evacuation facility | Higashiyama Junior High School | 98-1531 | 1 Higashiyama Sato-cho |
| | General evacuation facility | Sakuno Community Center | 74-3977 | 26 Kobayashigute Sasame-cho |
| | | Imaika Elementary School | 98-3033 | 2-1-52 Imaike-cho |
| | | Sakuno Elementary School | 76-6056 | 4-22-1 Sasame-cho |
| Nihongi | Community center evacuation facility | Nashinosato Elementary School | 71-3345 | 38 Mizokawa Sasame-cho |
| | General evacuation facility | Sasame Junior High School | 76-1777 | 151 Ryuta Sasame-cho |
| | | Nihongi Community Center | 77-8888 | 1-13-9 Mikawa Anjo Honmachi |
| | | Nihongi Elementary School | 76-4449 | 1-23-1 Midori-cho |
| Tobu | Community center evacuation facility | Misono Nursery School (Hokuken) | 75-2131 | 1-23 Misonocho |
| | General evacuation facility | Tobu Community Center | 77-7881 | 16 Genkaku Ooka-cho |
| | | Anjo-Tobu Elementary School | 76-2334 | 17-1 Maehata Ooka-cho |
| | | Anjo Higashi Senior High School | 74-1231 | 10 Odosuka Kitayamazaki-cho |
| Chubu | Community center evacuation facility | Chubu Community Center | 74-8570 | 83 Koyamanishi Shinden-cho |
| | General evacuation facility | Anjo-Chubu Elementary School | 75-2721 | 12 Daito-cho |
| | | Shinden Elementary School | 76-1488 | 30 Shinsakae Shinden-cho |
| | | Anjo-Kita Junior High School | 75-3525 | 18 Koyamanishi Shinden-cho |
| Chuo | Community center evacuation facility | Anjo City Gymnasium (Taikukan) | 75-3535 | 41-8 Shinjyama Shinden-cho |
| | General evacuation facility | Anjo Agricultural and Forestry High School | 76-6144 | 1 Chasagiri Ikeya-cho |
| | | Youth Center (Seishonen-no-ie) | 76-3432 | 1 Keddami Shinden-cho |
| | | Anjo Shimin Koryu Center | 71-0601 | 11-3 Daito-cho |
| Shorin | Community center evacuation facility | Culture Center | 76-1515 | 17-11 Sakura-machi |
| | General evacuation facility | Sakuramachi Elementary School | 75-3003 | 15-6 Sakura-machi |
| | | Nishikimachi Elementary School | 75-2725 | 9-33 Nishiki-machi |
| | | Shorin Community Center | 77-8888 | 10-1 Hiromi Anjo-cho |
| Ansho | Community center evacuation facility | Anjo Minami Junior High School | 75-3531 | 2-7-2 Jonan-cho |
| | General evacuation facility | Akamatsu Nursery School (Hokuken) | 75-2483 | 55 Sumidagawa Akamatsu-cho |
| | | Ansho Community Center | 76-6218 | 103 Ohta Akamatsu-cho |
| | | Shonan Elementary School | 76-8773 | 30 Shiroburi Anjo-cho |
| Seibu | Community center evacuation facility | Anjo-Nanbu Elementary School | 76-2332 | 48 Shiroburi Anjo-cho |
| | General evacuation facility | Ansho Junior High School | 76-7811 | 23 Amakusa Anjo-cho |
| | | Yutaka Nursery School (Hokuken) | 76-6452 | 25 Toyohi Furui-cho |
| | | Seibu Community Center | 76-9393 | 20-1 Kamagafuchi Fukama-cho |
| Meiwa | Community center evacuation facility | Anjo-Seibu Elementary School | 76-2303 | 128 Sarumachi Fukama-cho |
| | General evacuation facility | Takatana Elementary School | 92-0593 | 44 Hiruta Takatana-cho |
| | | Mikawa Anjo Elementary School | 71-3250 | 169-3 Jundo Minowa-cho |
| | | Anjo-Nishi Junior High School | 76-2320 | 43 Nakare Fukama-cho |
| Sakurai | Community center evacuation facility | Minowa Nursery School (Hokuken) | 75-1198 | 35 Yashita Minowa-cho |
| | General evacuation facility | Enoki Nursery School (Kodomoen) | 92-1230 | 5-1 Kitanoki Enokimae-cho |
| | | Meisho Community Center | 92-3521 | 38 Oshita Izumi-cho |
| | | Jozan Elementary School | 92-0024 | 1 Minami-Hongo Izumi-cho |
| Total | | Meiwa Elementary School | 41-1244 | 66 Meiwa Higashibata-cho |
| | | Meisho Junior High School | 92-0019 | 1-12 Suniyoashi Higashibata-cho |
| | | Jogai Nursery School (Kodomoen) | 92-0046 | 3 Marure Jogai-cho |
| | | Sakurai Community Center | 99-3313 | 1-1 Oyakuda Sakurai-cho |
| Total | | Sakurai Elementary School | 99-2201 | 6-1 Shimido Ogawa-cho |
| | | Ourin Elementary School | 99-3777 | 35-1 Nakahazama Sakurai-cho |
| | | Sakurai Junior High School | 99-0028 | 1-1 Matobaoka Ogawa-cho |
| | | Mitsukawa Nursery School (Kodomoen) | 99-1767 | 85 Gammyo Jiryo-cho |
| Total | | Anjo-Minami Senior High School | 99-2000 | 1 Monbara Sakurai-cho |
| | | | | |
| | | | | |
| | | | | |

Map Showing Ratio of Full Destruction and/or Fire Destruction of Buildings



Seismic Intensity Map



People with physical disabilities should evacuate to the following locations.

Welfare Evacuation Facility List

| Facility name | Phone number | Location |
|------------------------|--------------|----------------------------|
| Hokubu Welfare Center | 97-5000 | 6-9 Toei-cho |
| Sakuno Welfare Center | 72-7570 | 27-1 Futamata Sasame-cho |
| Sogo Welfare Center | 77-7888 | 78-1 Ohta Akamatsu-cho |
| Seibu Welfare Center | 72-6616 | 12 Saiten Fukama-cho |
| Sakurai Welfare Center | 99-7365 | 20 Shinden Sakurai-cho |
| Chubu Welfare Center | 76-0090 | 84-1 Shinsakae Shinden-cho |
| Ansho Welfare Center | 73-5757 | 96 Tamon Anjo-cho |
| Meisho Welfare Center | 92-3641 | 38-1 Oshita Izumi-cho |

Evacuation Area List

| Name | Location |
|------------------|----------------------------|
| Anjo Sports Park | 41-8 Shinjyama Shinden-cho |
| Anjo Park | 289-1 Sakura-machi |
| Akiba Park | 1-7-1 Oyama-cho |

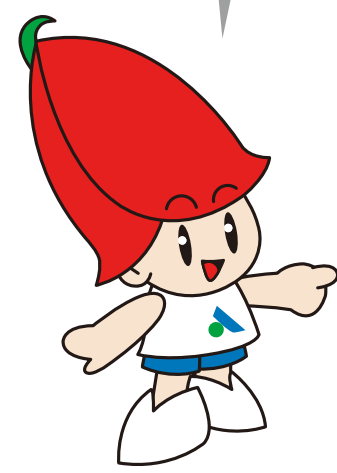
* Parks and grounds in the city have been designated as temporary evacuation sites where people can escape to in emergencies at times of large scale disaster. Also, three evacuation site locations designated as evacuation areas where people can evacuate to at times of large-scale fires.

List of medical relief centers

| Facility name | Phone number | Location |
|--|--------------|----------------------------|
| Higashiyama Junior High School | 98-1531 | 1 Higashiyama Sato-cho |
| Anjo-Kita Junior High School | 75-3525 | 18 Koyamanishi Shinden-cho |
| Anjo-Minami Junior High School | 75-3531 | 2-7-2 Jonan-cho |
| Meisho Plaza (Meisho Community Center/Meisho Welfare Center) | 92-3521 | 38-1 Oshita Izumi-cho |
| Sakurai Junior High School | 99-0028 | 1-1 Matobaoka Ogawa-cho |

* In the event of a major disaster, we will set up medical relief centers at Anjo Rehabilitation Hospital, Yachiyo Hospital, and five other locations in Anjo City.

The death toll can be kept at about 30 to 40% of the model by implementing preliminary measures such as securing home furnishings and reinforcing properties to withstand earthquakes.



| Explanation of Seismic Intensity | | |
|----------------------------------|--|---|
| Seismic intensity | Bodily sensations and behavior | Indoor situation |
| 7 | Unable to stand, you will have to crawl to move. You find yourself at the mercy of the shaking, unable to move and perhaps being tossed about. | Nearly all unsecured furnishings will move, topple and even toss about. |
| Upper-6 | | Nearly all unsecured furnishings will move and many of them will topple over. |
| Lower-6 | Difficult to stay standing. | The majority of unsecured furnishings will move and some may topple over. In some cases doors cannot be opened. |